

The eBridge Update Installer is used to install eBridge Update Files (.ebu) to update eBridge Software.

Storing .ebu Files

It is recommended that **.ebu** files be stored in a separate directory titled **Update_Files** in the eBridge2006 directory (C:\Program Files\eBridgeSoft\eBridge2006\Update_Files).

Warning! The saving process might improperly rename the Update File with a **.zip** extension. If this occurs, edit the extension by removing **.zip** so that it only reads **.ebu**. For example, assume the eBridge Update File is improperly renamed as follows:

B06.7.45.CUM_20080507.ebu.zip

Rename the file by removing **.zip** so that it reads:

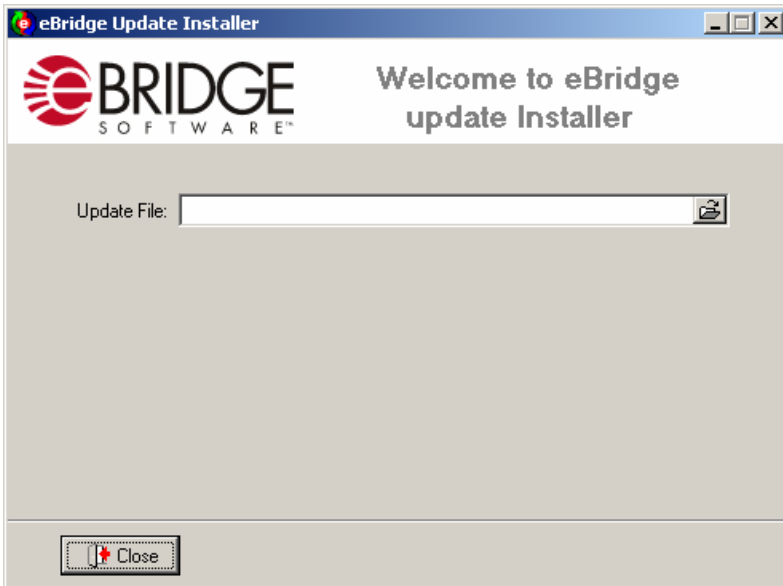
B06.7.45.CUM_20080507.ebu

Storing the Update Installer Application

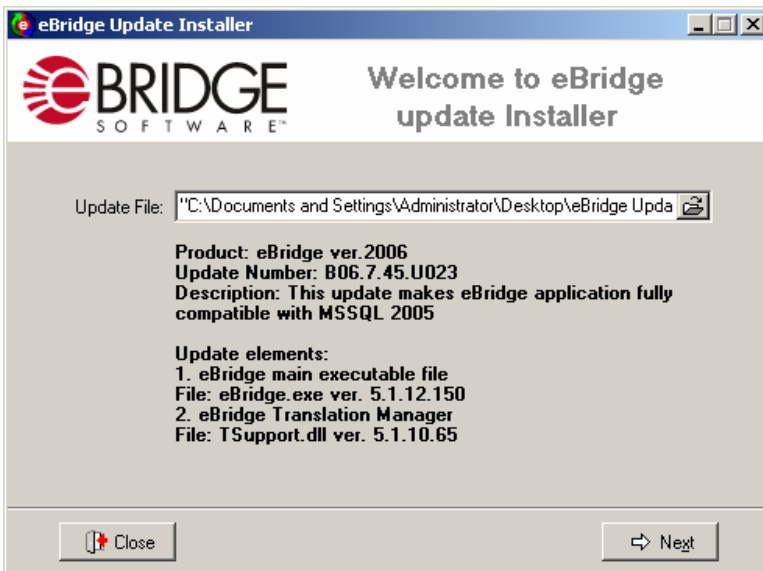
Store the **ebUpdate.exe** file in the root eBridge2006 directory:
(C:\Program Files\eBridgeSoft\eBridge2006)

Updating with the Update Installer

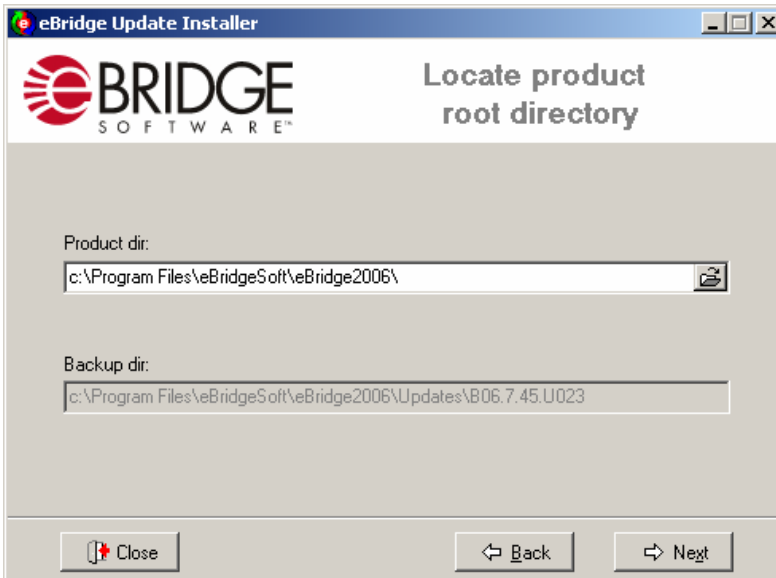
1. Double-click **ebUpdate.exe** to open the Update Installer (*see screen shot next page*).



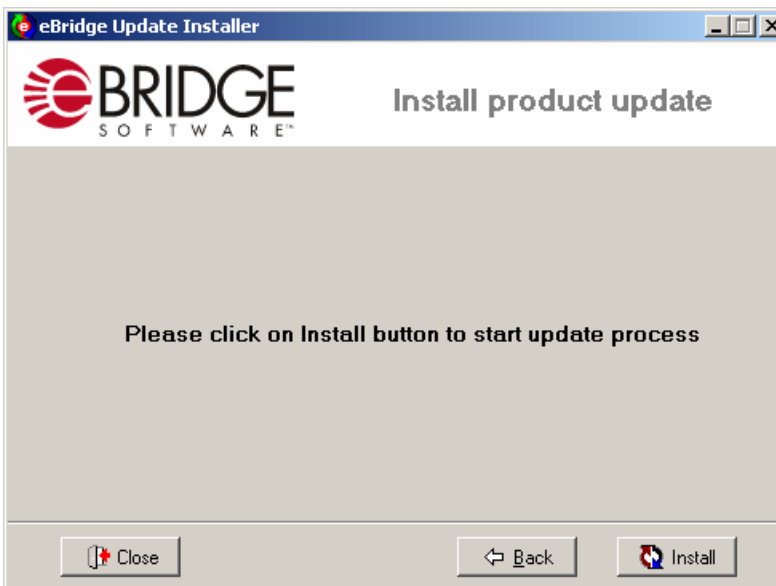
2. Click the Browse button (📁) beside the Update File text box and navigate to the required .ebu file (stored in the Update_Files directory as instructed earlier).
3. Select the .ebu file and click **Open**. The update file information is displayed.



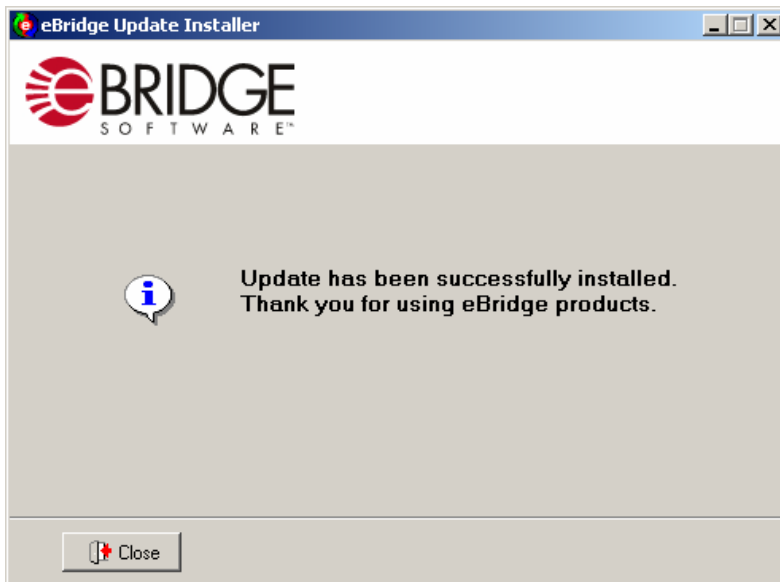
4. Click **Next**. The Locate product root directory screen appears.



5. Ensure in the **Product dir** text box that the root directory is displayed (C:\Program Files\eBridgeSoft\eBridge2006)
6. Click **Next**. The Install product update screen appears.



7. Click the **Install** button. When the update is installed successfully the following screen appears:



8. Click **Close** to exit the Update Installer.

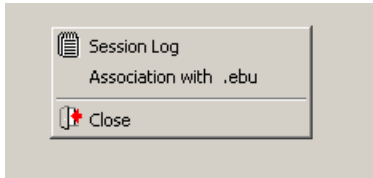
Note: The backups of all updated components as well as ebUpdate.log files are stored in the Updates subfolder (C:\Program Files\eBridgeSoft\eBridge2006\Updates), which is automatically created during the update process.

Associate .ebu Files with Update Installer

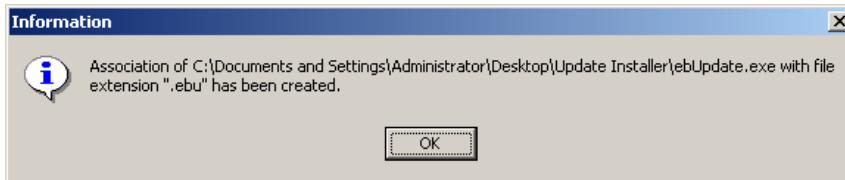
By associating **.ebu** files with the Update Installer, you can streamline the update process by only having to double-click an **.ebu** file to start the install.

To associate **.ebu** Files, complete the following steps (note that this is a one-time step that does not need to be repeated).

1. With the Update Installer open, right-click anywhere in the window and select the **Association with .ebu** option.



2. The following message appears. Click **OK**.



3. Click **Close** to exit the Update Installer.
4. The next time an update file must be installed, it is only necessary to just double-click the **.ebu** file to start the install.